

Technical specification card of insulating plates IZOROL-PP

Pads made of Styrofoam strips on one side covered with polypropylene textile, lined with polypropylene of surface mass 95 g/m².

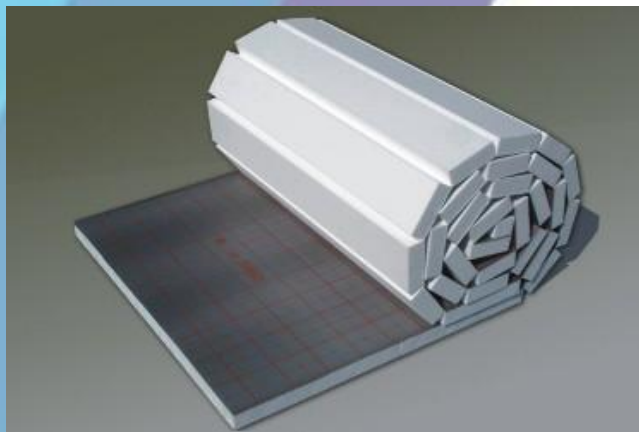
Endurance parameters of insulating plates IZOROL-PP

Description	Unit	requirements
The endurance on tearing of the connection EPS plates - textile	Kg/cm	≥ 0,05
The resistance of the glue connection on the activity of the temperature + 60° C	Kg/cm	≥ 0,05

Insulation plates are equipped in the label describe:

- Name of product
- Name and address of producer
- Date and code of production
 - Dimensions
- Number of european norm
- Number and date of declaration of conformity
 - The builder's sign

Insulating plates Izorol-PP are provided in the original wrapping of the tradesman (the foil PE) or uncased in the dependence from requirements of the purchaser.



To production insulating plates IZOROL-PP complies polystyrene plates in compliance with PN-EN 13163.

1. EPS plates EPS 100:

EPS-EN 13163-T1-L1-W1-S1-P3-BS150-CS(10)100-DS(N)5-DS(70,-)2-DLT(1)5

Isolating parameters of IZOROL pads with the applied of polystyrene plates EPS 100

Description	unit	class		requirements
Length	mm	L1		- 1% ; + no limited
Width	mm	W1		± 0,6% or ± 2 mm
Thickness	mm	T1		± 2 mm
squareness	mm/m	S1		± 5 mm/1000 mm
Flatness	mm	P3		± 10 mm
Bending strength	kPa	BS150		≥ 150
Compressive stress at 10% deformation	kPa	CS(10)100		≥ 100
Dimensional stability under constant normal laboratory conditions	%	DS(N)5		± 0,5
Dimensional stability under specified temperature and humidity conditions (70° C, 48 h)	%	DS(70,-)2		max 2
Deformation under specified compressive load and temperature conditions	%	DLT(1)5		≤ 5
Declared value of thermal conductivity	W/mK			max 0,038
Fire behaviour		E		
Thermal resistance	Thickness (mm)	25	30	50
	R _D (m ² K/W)	0,65	0,75	1,30

2. EPS plates EPS 200

EPS-EN 13163-T2-L2-W2-S2-P4-BS250-CS(10)200-DS(N)5-DS(70,-)2-DLT(1)5

Isolating parameters of IZOROL pads with the applied of polystyrene plates EPS 200

(EPS 200 plates are applied to max load over 2000kg/1m²)

description	unit	class		requirements
Length	mm	L2		- 1% ; + no limited
Width	mm	W2		± 0,6% or ± 2 mm
Thickness	mm	T2		± 1 mm
Squareness	mm/m	S2		± 2 mm/1000 mm
Flatness	mm	P4		± 5 mm
Bending strength	kPa	BS250		≥ 250
Compressive stress At 10% deformation	kPa	CS(10)200		≥ 200
Dimensional stability under constant normal laboratory conditions	%	DS(N)5		± 0,5
Dimensional stability under specified temperature and humidity conditions (70° C, 48 h)	%	DS(70,-)2		max 2
Deformation under specified compressive load and temperature conditions	%	DLT(1)5		≤ 5
Declared value of thermal conductivity	W/mK			max 0,036
Fire behaviour		E		
Thermal resistance	Thickness (mm)	25	30	50
	R _D (m ² K/W)	0,65	0,80	1,35

3. EPS flexible EPS T

- a. EPS EN 13163-T4-L1-W1-S1-P3-BS50-DS(N)5-SD(10-15)-CP3
- b. EPS EN 13163-T4-L1-W1-S1-P3-BS50-DS(N)5-SD(20-30)-CP(2-3)

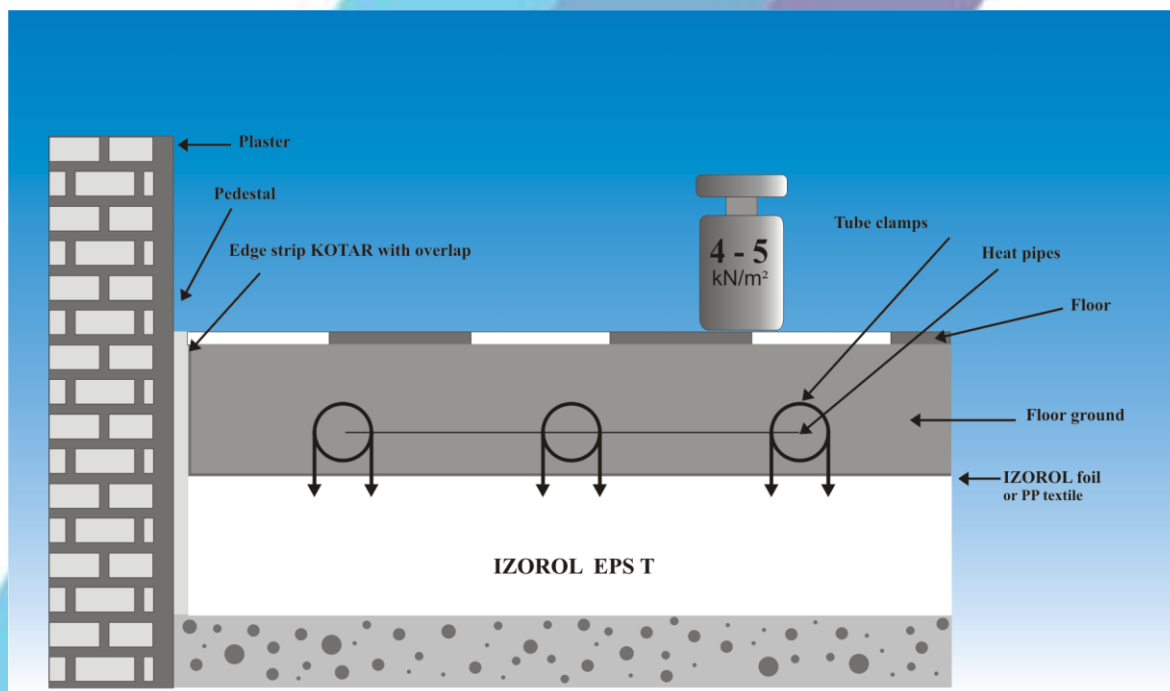
acc PN-EN 13163 using at the floor beam, in order to increase insulating properties from impact sounds(acoustic insulation) of pad nominal thickness 25, 30 and 35 mm.

Plates can be used in rooms for which the useful total capacity of floors does not exceed 5,0 kN/m² (CP2) or 4,0 kN/m² (CP3)

Isolating parameters of IZOROL pads with the applied of polystyrene plates EPS T

Pos.	thickness (t) mm	Dynamic stiffness (S) MN/m ³	compressibility (CP) mm	Maximum bearing capacity on the equalizing (smooth layer) (KN/m ²)	The indicator of sound waves bang reduction (ΔL_w) dB	Thermal conductivity (λ_d) W/mK
1.	25-2	≤ 30	≤ 2	5,0	26	0,040
2.	30-2	≤ 20	≤ 2	5,0	28	0,040
3.	30-3	≤ 15	≤ 3	4,0	29	0,045
4.	35-3	≤ 15	≤ 3	4,0	30	0,045

The section through the ceiling with the use of plates IZOROL EPS T



Insulating plates IZOROL-PP pack

IZOROL-PP pack insulation pads were designed to increase convenience of storage and transport of the pads as well as to improve the aestetical properties of the item. What is more, film covering protects the boards against mechanical damage.

Each set contains two boards of 5 m² (thickness 30mm) or two boards of 6m² (thickness 25mm).



Insulating plates IZOROL-PP duo

IZOROL-PP duo insulation pads are manufactured from two continuous foamed polystyrene boards sized 100cm x 100cm.

Each multiset contains 5 items of 2m²

